

MYANMAR - JOBS FOR PEACE AND RESILIENCE PROGRAMME

OVERVIEW

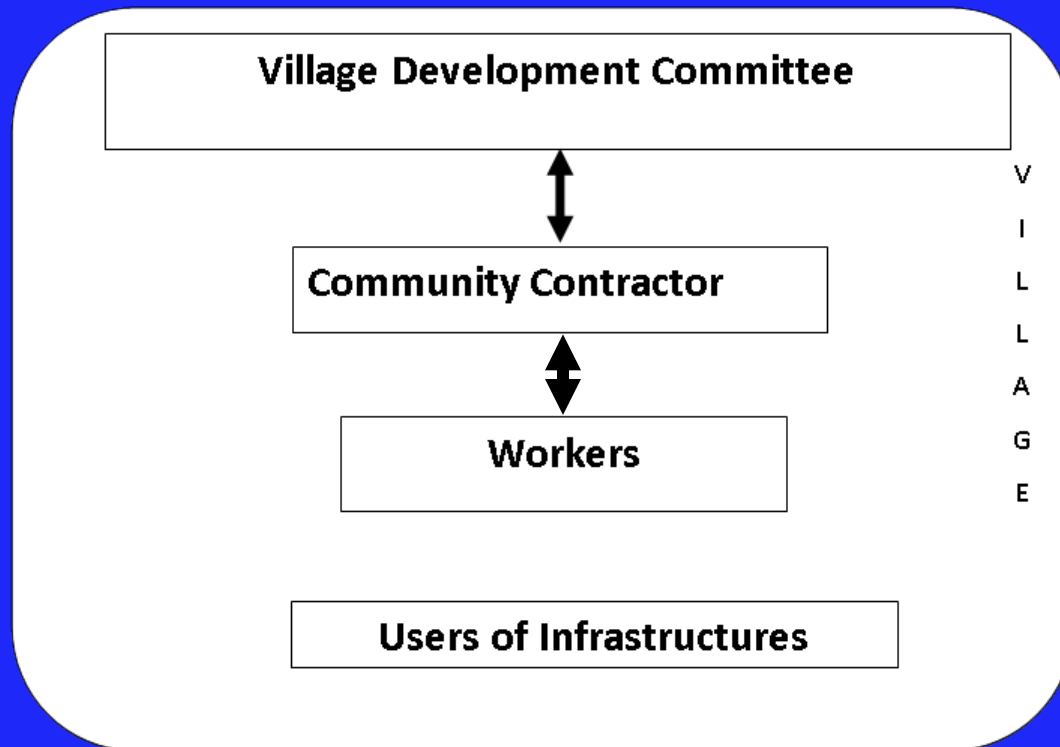


JPR Key Features

- **Employment generation programme for conflict-affected and disaster prone countries** that provides opportunities for **local economic recovery and development, jobs, and income generation**
- **Builds on employment-intensive infrastructure investment and related capacity development strategies.** The ILO Employment-Intensive Investment Programme (EIIP) has more than 40 years experience in over 30 countries with employment-intensive investments in infrastructure. The use of Local Resource-Based (LRB) approach is a key feature of EIIP



Village Level Project Structure:



Implementation

- Establishment of Village Development committee and selection of Community contractors and workers.
- Public Hearing
 - Before actual implementation starts
 - Space for the people to deliberate their concerns and feedbacks
 - Organisational policies, costs and material provided, labour contribution, social processes, as well as the responsibilities of different stakeholders
 - Construction work plan
 - Agreement is signed



Implementation

- Supervision and Monitoring
 - Capacity building and On-the-job training for semi skilled workers.
- Follow-Up Public hearing meeting:
 - At least once during implementation phase to monitor the progress
 - Review self-monitoring tool for quality control and
 - Revisit implementation plan
 - Check
 - Have all stakeholders committed to their tasks? Has the material been delivered as promised?
 - Have the trainings been conducted?
 - Have people deposited into the operation and maintenance fund as agreed?



Implementation

- Public Auditing
 - After a project is completed
 - Users, committee, contractors etc. jointly commission and audit the project performance
 - All cash and in-kind transactions are presented to community.
 - Clarifications on issues raised and decisions in case of any kind of misuses
 - Final opportunity for community to complain about missing payments or material, or other issues
 - Address every issued raised and decided to be correct
 - Discuss on a future outlook



Ensuring sustainability

- Establishment of Operation and Maintenance (O&M) Committee and maintenance funds.
- Handing over of infrastructure to (O&M) Committee.
- Training on roles and responsibilities for O&M committee
- Preparation of individual infrastructure maintenance plan



40 Years International Experience of ILO-EIIP with Local Resource-Based Public Works Programmes

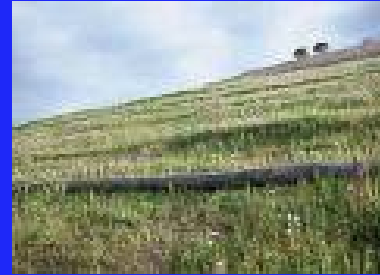
Advantages of Local Resource-Based (LRB) Methods compared to Equipment-Based (EB) Methods:

- 25%-70% more spent on wages
- 2-5 times more employment
- 10-30% more cost-effective
- Optimum use local resources
- No compromise on quality
- Improved income distribution
- More scope for local participation
- Inclusion decent work standards
- More environmentally friendly
- Focus on local capacity development



SECTORS WITH LARGE POTENTIALS FOR APPLYING LRB APPROACHES

- Low-Volume **Rural Roads** (rehabilitation and maintenance) and footbridges
- **Forestry** (e.g. afforestation, agro-forestry and bio-engineering stabilization works)
- **Soil & Water Conservation** (e.g. terracing, water harvesting, contour trenches and bunds, gully control check dams, gabion works)
- **Community Irrigation** (incl. gravity irrigation channels and intakes, night storage reservoirs, borehole irrigation)
- **Flood Protection** (e.g. embankments and dikes, water diversion structures, drainage works, river training works)
- **Small Community Infrastructure** (water & sanitation, schools, health centers, fish ponds, etc.)



EIIP AND DECENT JOBS

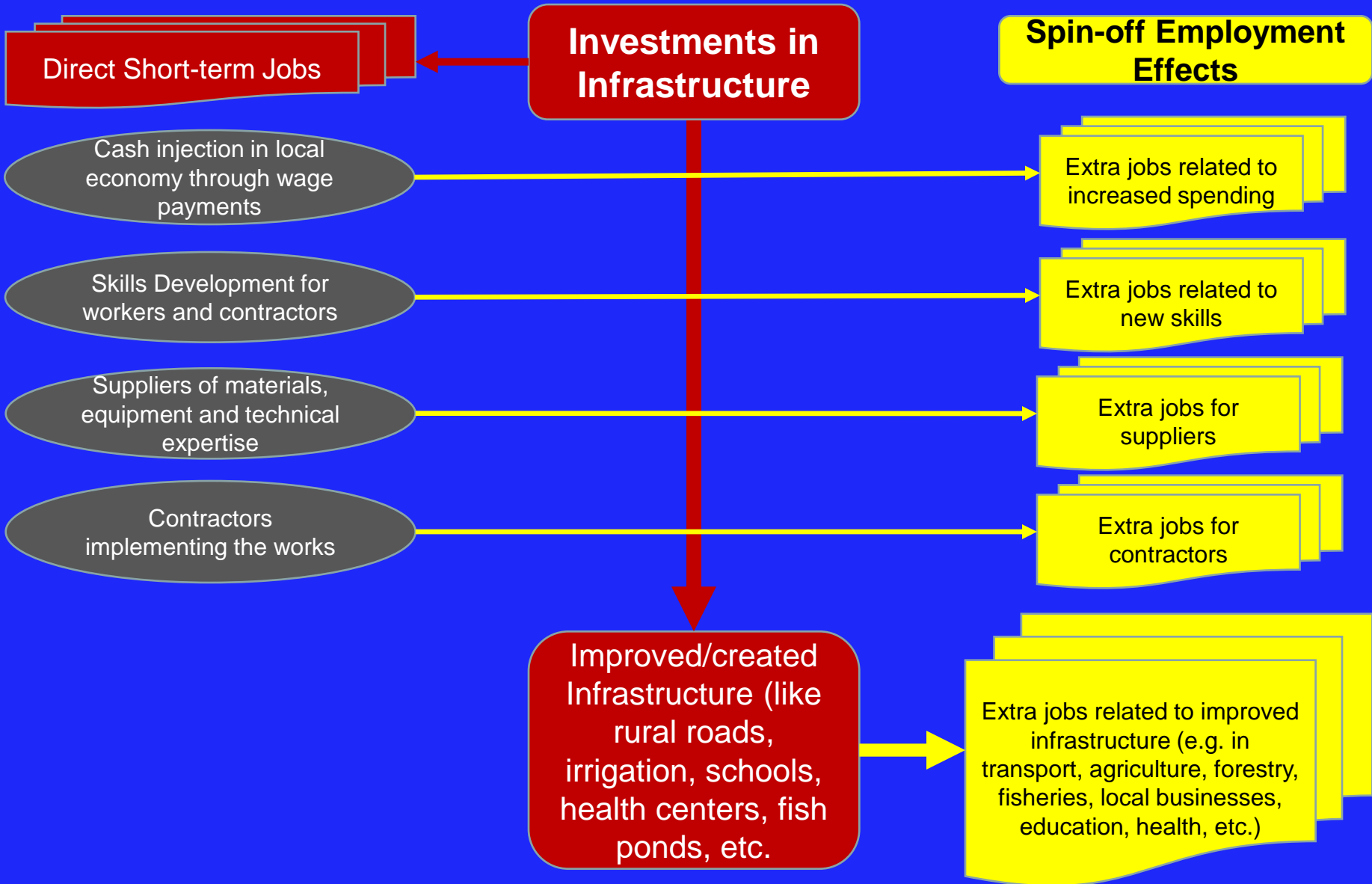
Employment Creation is not only about the quantity of jobs but equally important about the quality of the jobs, i.e. it is about decent jobs

Decent Jobs are productive jobs that provide:

- Fair wages (at least minimum wage) with equal payment for work of equal value
- Social protection and security in the work place
- Equal job opportunities for all
- Gender equality
- Minimum age requirements
- Good working conditions (like working hours, rest, provision of clean drinking water, timely payments, provision of safety equipment)
- Prospects for personal development



Spin-off Employment Effects of Investments in Public Works Programmes using Local Resource-based Methods and Technologies



SOME EXAMPLES OF APPLICATION OF LRB APPROACHES

