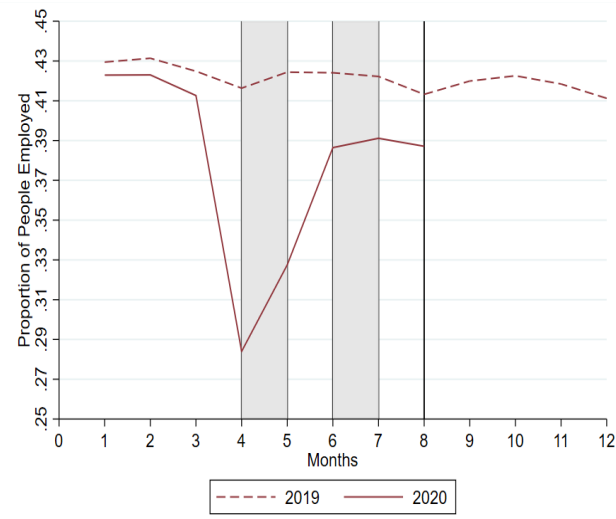


# The Impact of Covid-19 in India and Pathways to Recovery

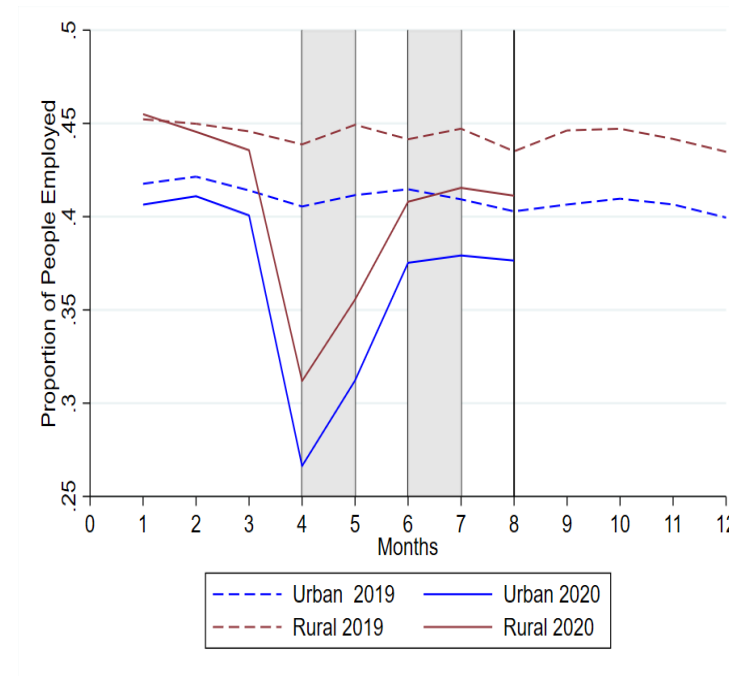
Farzana Afridi  
Indian Statistical Institute (Delhi)

IGC India  
May 5, 2021

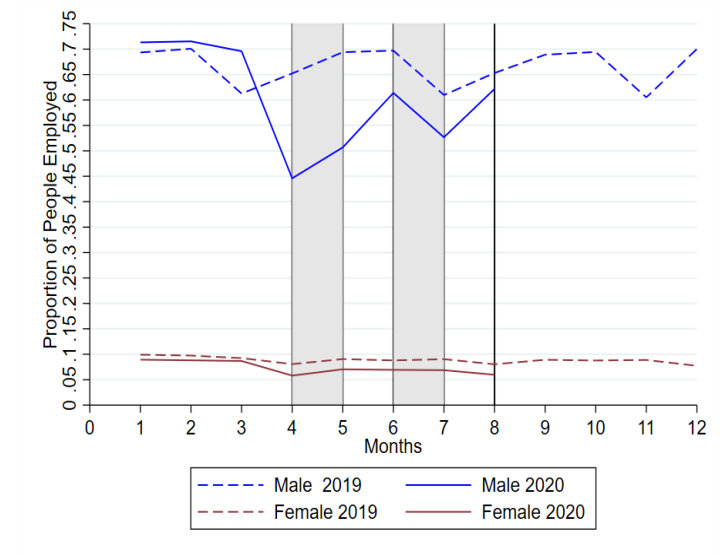
# Aggregate labor market impact of Covid-19



a: Year



b: Region



c: Gender

Source: Afridi, Mahajan, Sangwan (2021)

Date: CMIE CPHS

# Micro study in urban India

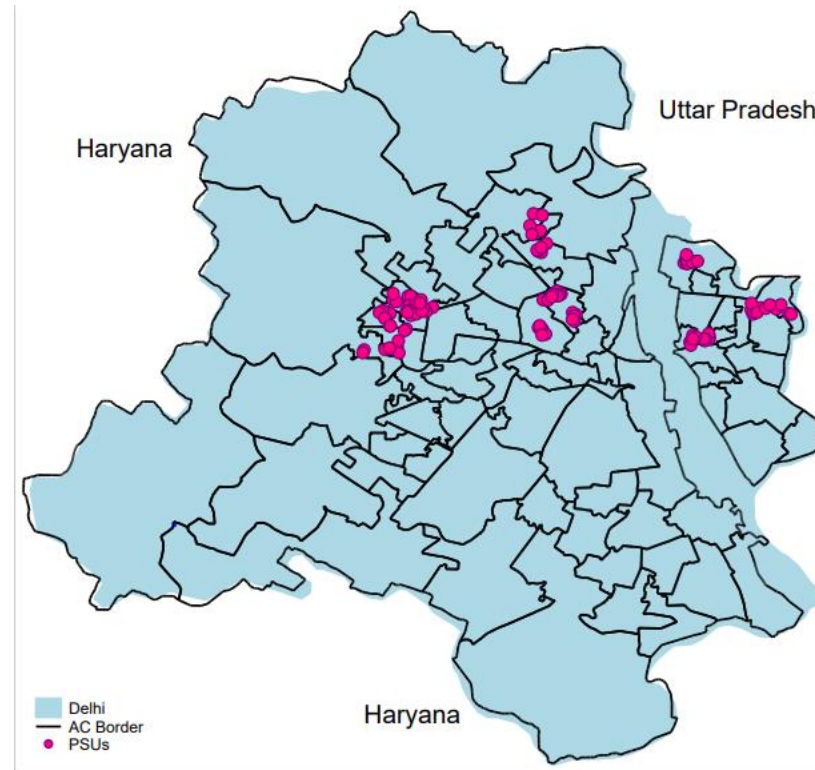
- Afridi, Dhillon and Roy follow a random sample of poor, primarily informal workers, residing near industrial clusters in 5 districts of Delhi.
- Household survey (N=1613) and matched husband-wife panel of married couples in the 18-45 age group residing in surveyed households (N>3000)
- Three rounds of surveys:

*Pre-Covid* : May-July 2019 (in-person)

*During Covid-19 lockdown* : April - May 2020 (men's phone survey)

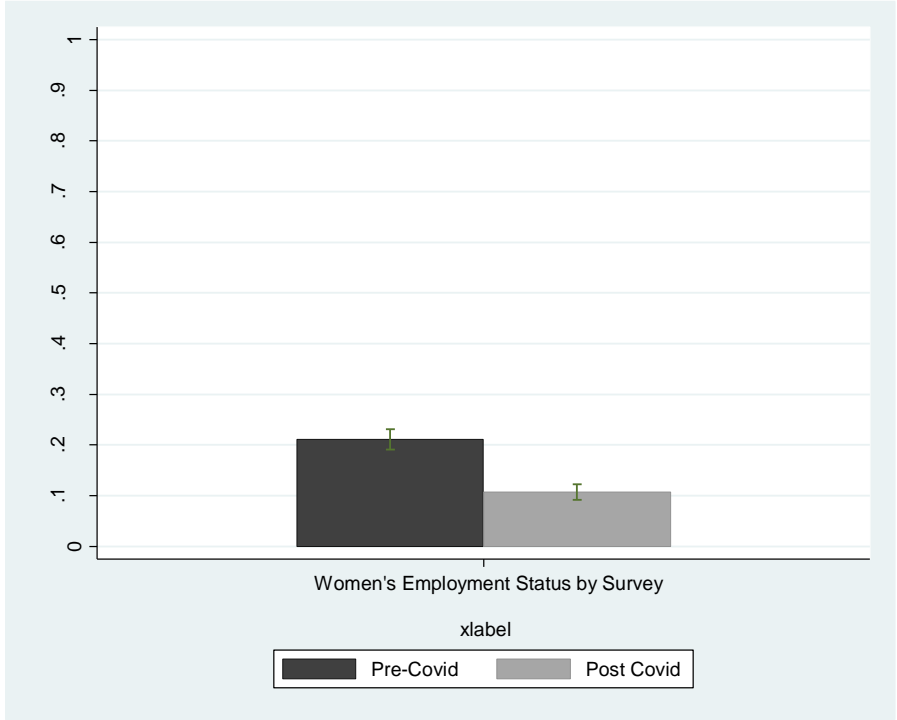
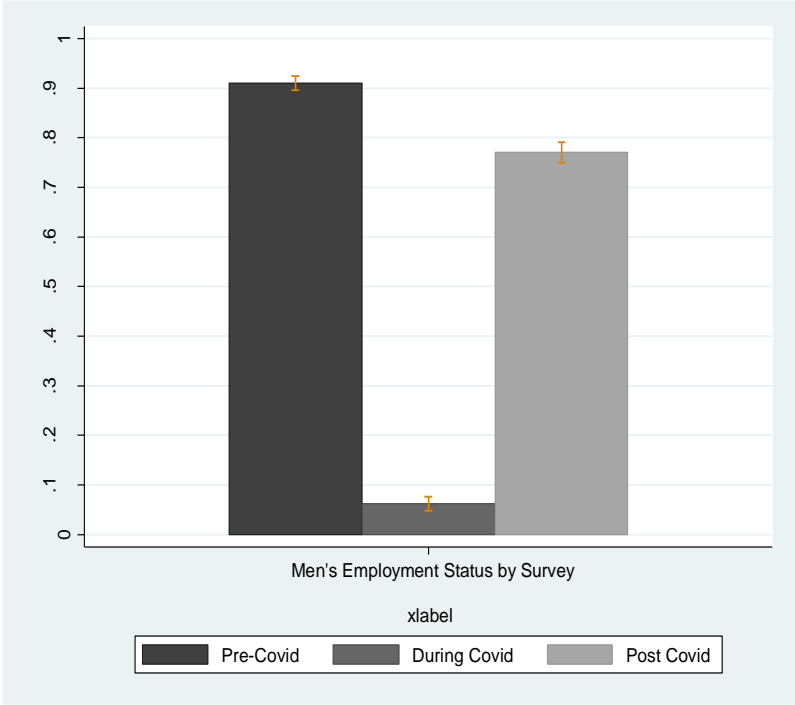
*Post-Covid19 lockdown* : Aug-Oct 2020 (phone survey)

# Sample areas



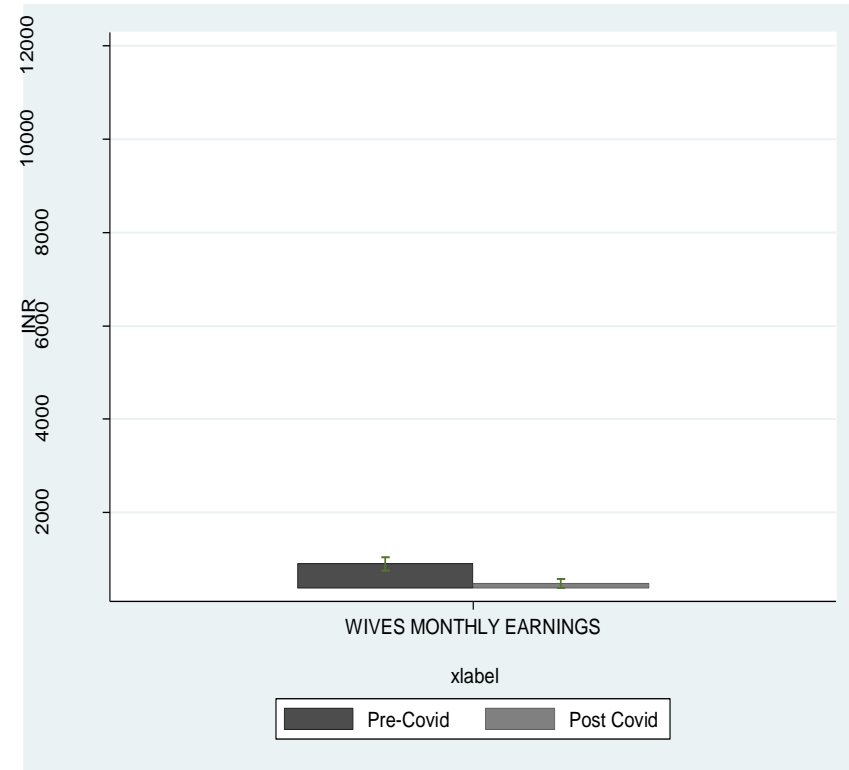
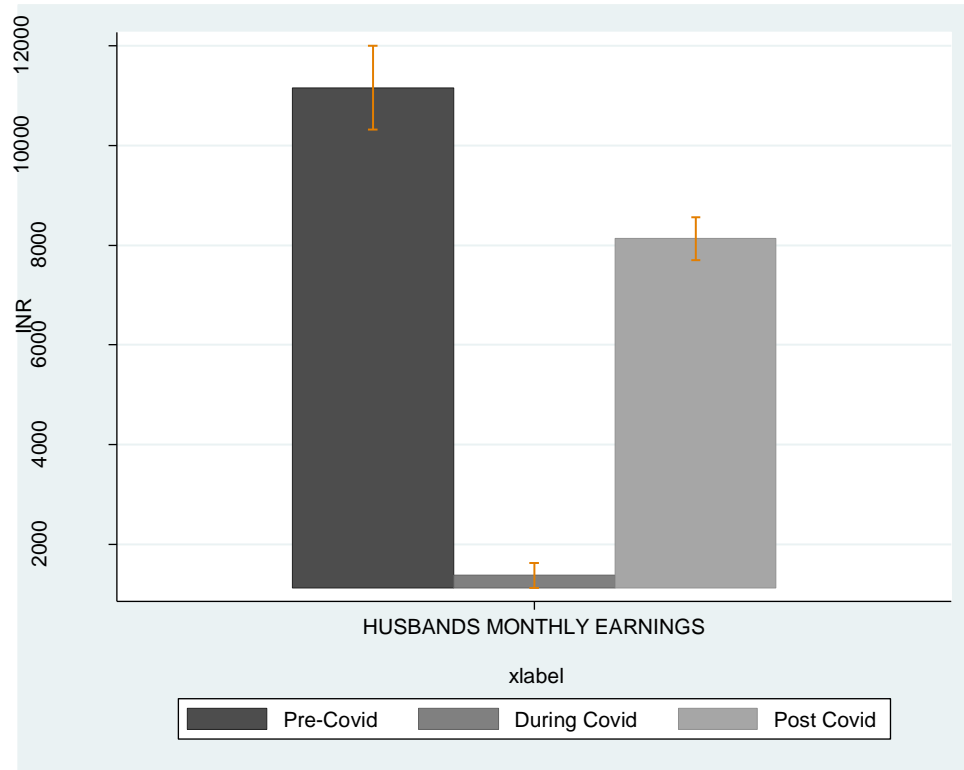
Source: Afridi, Dhillon and Roy (2021)

# Impact on “working status”



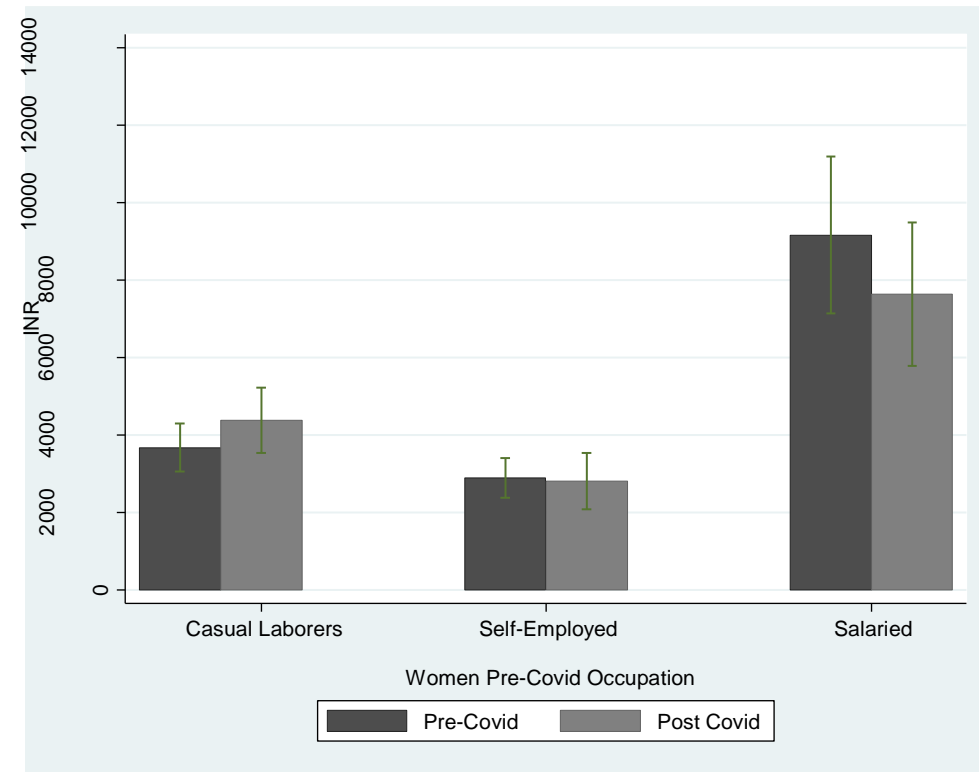
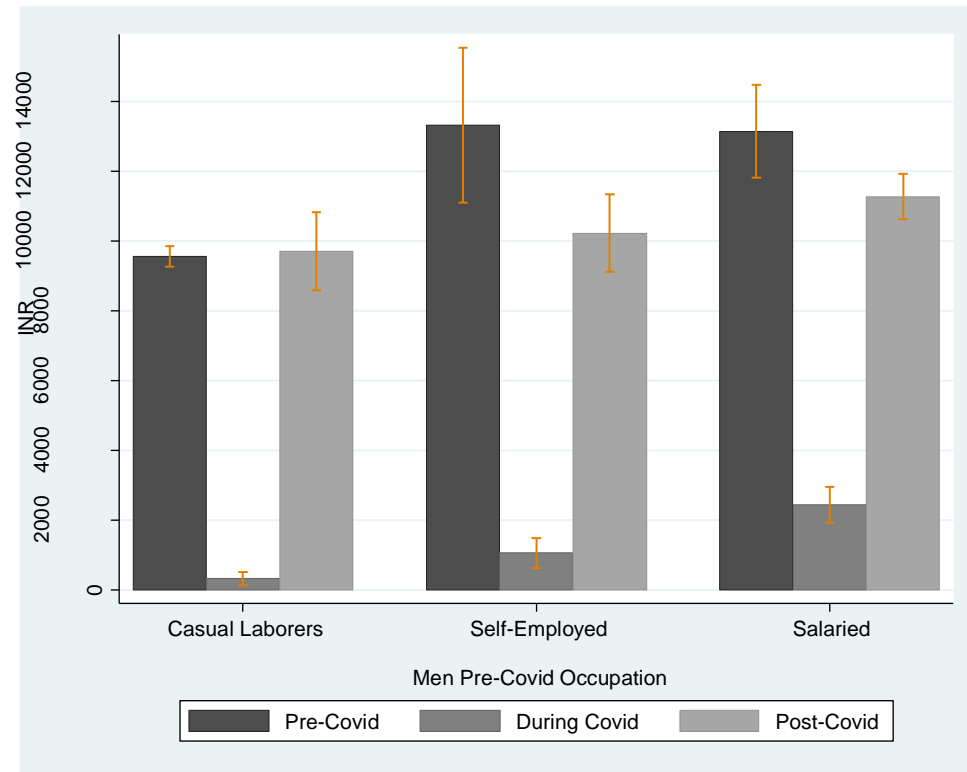
Source: Afridi, Dhillon and Roy (2021; work-in-progress)

# Impact on monthly earnings



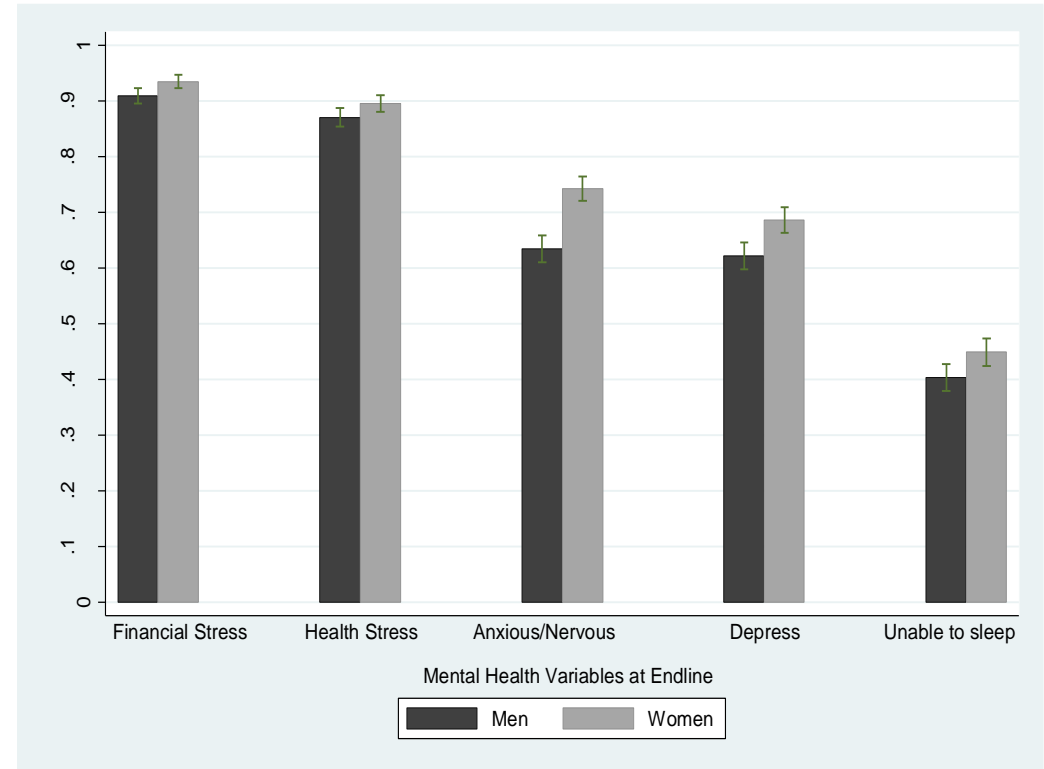
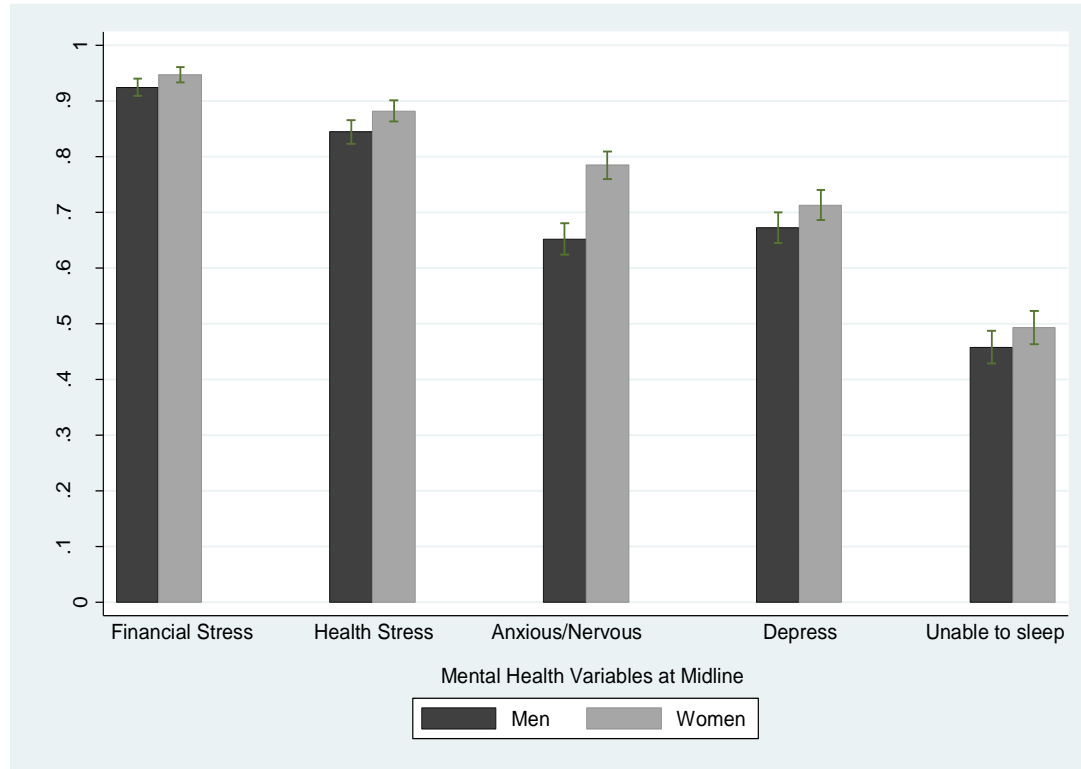
Source: Afridi, Dhillon and Roy (2021; work-in-progress)

# Impact on earnings conditional on occupation



Source: Afridi, Dhillon and Roy (2021; work-in-progress)

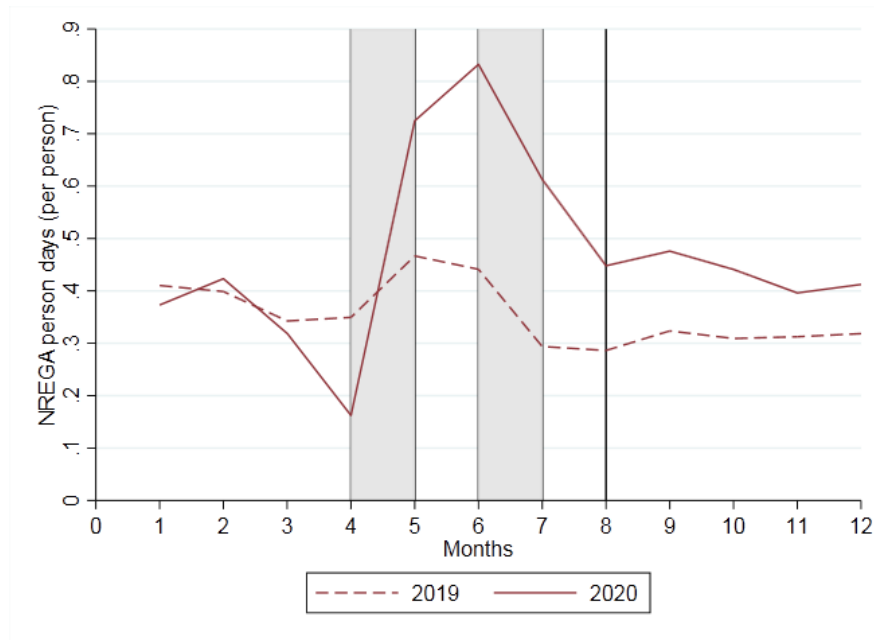
# Impact on mental health



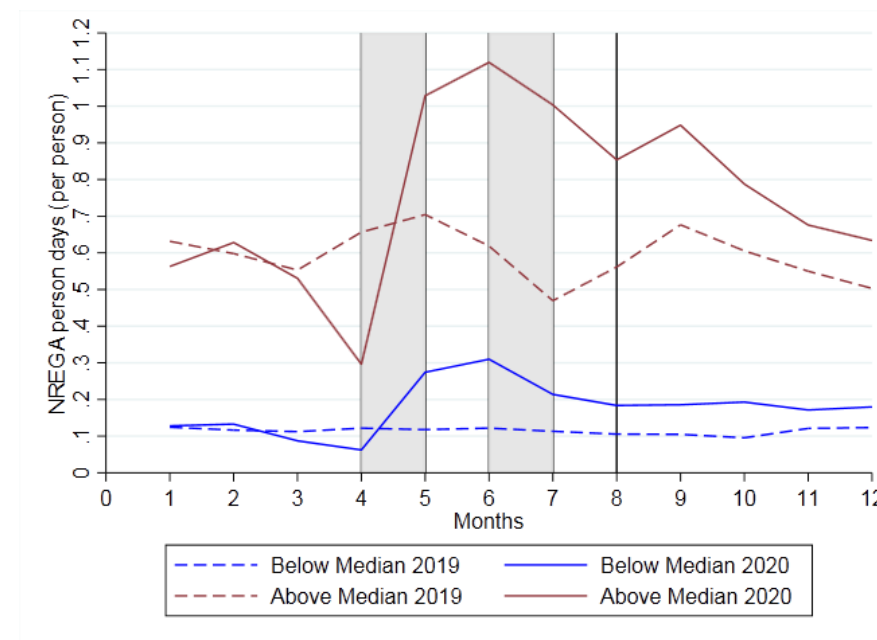
Source: Afridi, Dhillon and Roy (2021; work-in-progress)



# Pathways to recovery: Urban Social Protection?



a: Current



b: Historical (2014-18)

Source: Afridi, Mahajan, Sangwan (2021)  
Date: NREGA Data Portal

# Summary

- Self reported working status fell by over 85 pp (during lockdown) and remained lower by 14 pp post lockdown, relative to pre-crisis for men.
- Women's self-reported working status fell by 10 pp relative to pre-crisis.
- Men's earnings were lower by 27.8% relative to pre-crisis, while women's fell by 47%.
- Persistently high levels of mental distress, relatively higher for women.